

Sand, Gravel and Stone Mines of the Central Spring Mountains, Clark and Nye Counties, Nevada

Gregg Wilkerson
2024

yosoygeologo@gmail.com

https://www.academia.edu/122019097/Sand_Gravel_and_Stone_Mines_of_the_Central_Spring_Mountains_Clark_and_Nye_Counties_Nevada

LOCATION

The Spring Mountains are in the southeast tip of Nevada, south of Las Vegas and west of the Primm Valley. They are mostly in Clark County. The northwestern edge of the Central Spring Mountains are in southern Nye County.

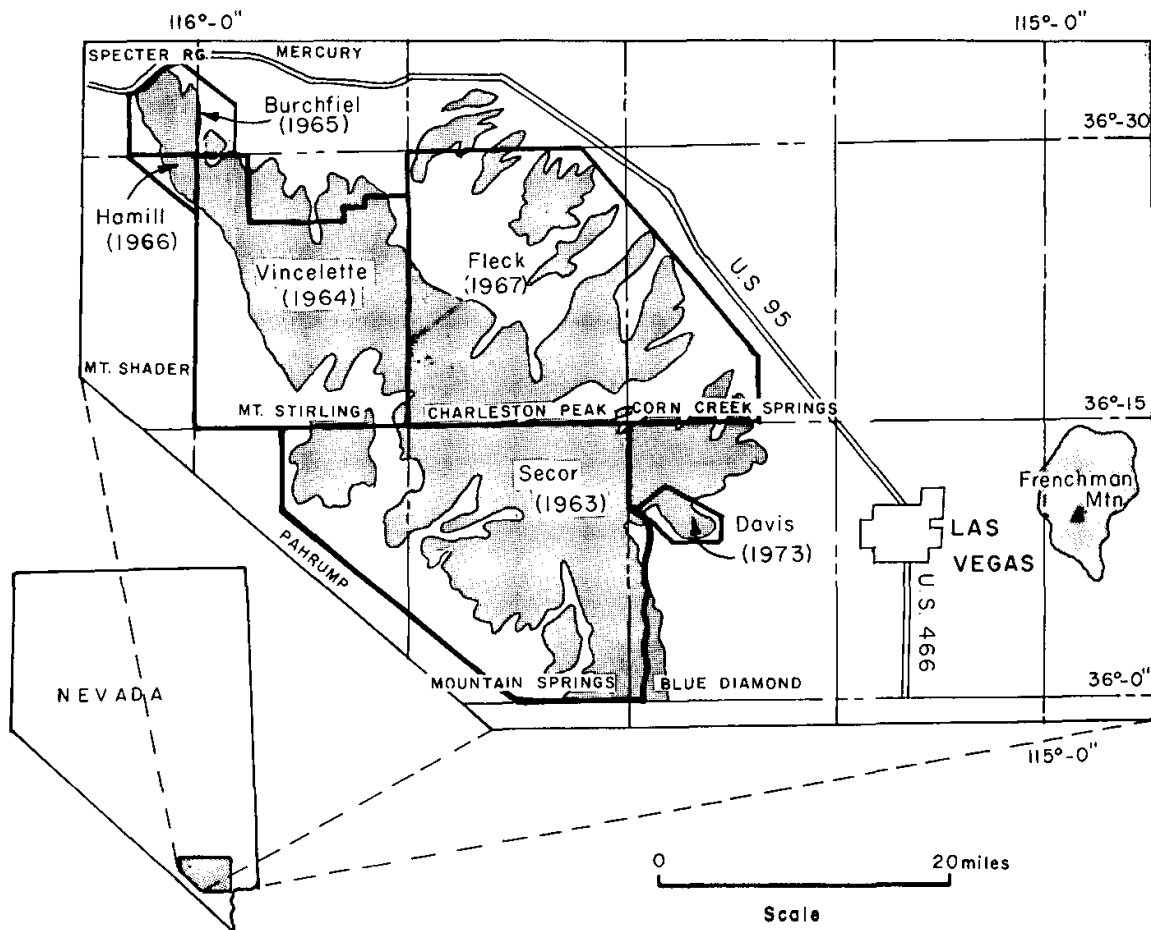


Figure 1. Location map of the Spring Mountains, Nevada, showing areas of mapping responsibility. Quadrangle names are shown for the Spring Mountains area.

Figure 1. Location map of the Spring Mountains. From Burchfiel and others, 1974, Figure 1, p. 1013. Open source for educational purposes. No copyright.

There are 23 sand and gravel or dimension stone mines listed in the MRDS (2011) database for the Central Spring Mountains. These are illustrated in Figure 02 on page 2 and listed in Table 01 on page 3.

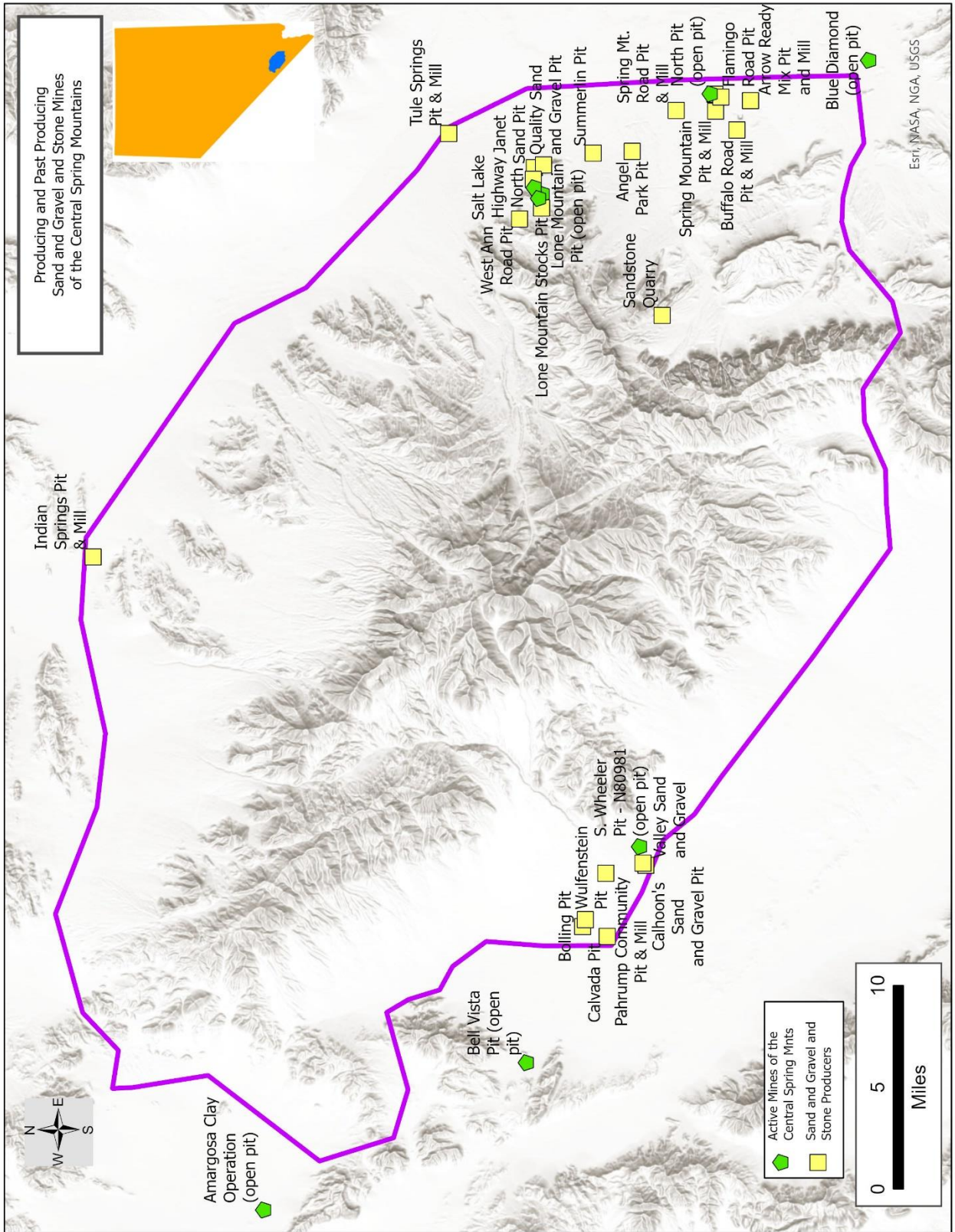


Figure 2. Location Map. Open source for educational purposes. No copyright.

TABLE 01. Sand and Gravel or Stone Mines of the Central Spring Mountains

DEPOSIT OR MINE NAME	COMMODITIES	LATITUDE	LONGITUDE	TRS
Angel Park Pit	Sand and Gravel, Construction	36.183290	-115.305500	20S 60E Sec 30
Arrow Ready Mix Pit and Mill	Sand and Gravel, Construction	36.098290	-115.262700	21S 60E Sec 28
Bolling Pit	Sand and Gravel, Construction	36.226380	-115.987200	20S 53E Sec 11
Buffalo Road Pit & Mill	Sand and Gravel, Construction	36.108290	-115.288300	21S 60E Sec 20
Calhoon's Sand and Gravel Pit	Sand and Gravel, Construction	36.182790	-115.931900	20S 54E Sec 29
Calvada Pit	Sand and Gravel, Construction	36.208880	-115.996100	20S 53E Sec 14
Flamingo Road Pit	Sand and Gravel, Construction	36.123590	-115.256400	21S 60E Sec 15
Indian Springs Pit & Mill	Stone, Crushed/Broken	36.572180	-115.655800	16S 56E Sec 09
Janet Sand Pit	Sand and Gravel, Construction	36.253290	-115.318300	19S 59E Sec 36
Lone Mountain Stocks Pit	Sand and Gravel, Construction	36.248590	-115.353900	19S 59E Sec 34
Pahrump Community Pit & Mill	Sand and Gravel, Construction	36.209390	-115.940500	20S 54E Sec 17
Quality Sand and Gravel Pit	Sand and Gravel, Construction	36.246690	-115.316100	20S 59E Sec 01
Rico Paving & Grading Pit	Sand and Gravel, Construction	36.119390	-115.259100	21S 60E Sec 15
Salt Lake Highway North	Sand and Gravel, Construction	36.254190	-115.328600	19S 59E Sec 36
Sandstone Quarry	Stone, Crushed/Broken	36.163890	-115.450200	20S 58E Sec 35
Spring Mountain Pit & Mill	Sand and Gravel, Construction	36.123290	-115.271400	21S 60E Sec 16
Spring Mt. Road Pit & Mill	Sand and Gravel, Construction	36.151390	-115.270200	21S 60E Sec 04
Summerlin Pit	Sand and Gravel, Construction	36.211090	-115.306400	20S 60E Sec 18
Tule Springs Pit & Mill	Sand and Gravel, Construction	36.313890	-115.286900	19S 60E Sec 08
Valley Sand and Gravel	Sand and Gravel, Construction	36.180790	-115.933900	20S 54E Sec 29
West Ann Road Pit	Sand and Gravel, Construction	36.264390	-115.363300	19S 59E Sec 27
Wulfenstein Pit	Sand and Gravel, Construction	36.224380	-115.981100	20S 53E Sec 11

Additional information about these mines is provided in Appendix 01.

REGIONAL GEOLOGY

The regional geology of the central Spring Mountains is described in the overview paper for this report series. It can be accessed at

http://www.greggwilkerson.com/uploads/1/0/6/5/106585235/geology_and_mining_history_of_the_central_spring_mountains.pdf

A geologic map mosaic and index for the Central Spring Mountains is posted at <http://www.greggwilkerson.com/spring-mnts-central.html>

MINE GEOLOGY

Most of the sand and gravel and stone mines in the Central Spring Mountains are on the flanks of the mountain range in Quaternary alluvial materials. The Sandstone Mine produces dimension stone from the Devonian to Cambrian Goodsprings Dolomite (Longwell and others, 1965).



Goodsprings Dolomite
*(Found only in the area west
and southwest of Las Vegas)*

REFERENCES.

Longwell, C. R., Pampeyen, E. H., Bowyer, B., Roberts, R. J., 1965 , Geology and Mineral Deposits of Clark County, Nevada, Nevada Bureau of Mines and Geology, Bulletin 62, p. 186

MRDS, 2011, Mineral Resources Data System, U.S. Geological Survey;
<https://mrdata.usgs.gov/mrds/>

APPENDIX 01

Sand and Gravel and Dimension Stone Mines of the Central Spring Mountains, Nevada

APPENDIX 01

DEPOSIT OR MINE NAME	COUNTY	COMMODITIES	TYPE	STATUS	PREVIOUS NAMES	REFERENCES	LATITUDE	LONGITUDE	TRS
Angel Park Pit	Clark	Sand and Gravel, Construction	Surface	Producer		NEV. DIV. MINE INSPECTION, 1991, DIRECTORY OF NEVADA MINEOPERATIONS ACTIVE DURING CALENDAR YEAR 1990, P. 16.	36.183290	-115.305500	20S 60E Sec 30
Arrow Ready Mix Pit and Mill	Clark	Sand and Gravel, Construction	Surface	Past Producer		NEV INDUS COMM DIR OF ACT NEV MINE OPS, JAN 31, 1977, P.7.LOCATION- BUFFALO ROAD AT WEST TROPICANA AVENUE, LAS VEGASSTATE OF NEVADA. DIRECTORY OF NEVADA MINE OPERATIONSACTIVE DURING CALENDAR YEAR 1982, COMPILED BY DIVISIONOF MINE INSPECTION, 1983, P. 6.	36.098290	-115.262700	21S 60E Sec 28
Bolling Pit	Nye	Sand and Gravel, Construction	Surface	Producer		STATE OF NEVADA. DIRECTORY OF MINE OPERATIONSACTIVE DURING CALENDAR YEAR 1982. COMPILED BYDIVISION OF MINE INSPECTION, 1983, 60 PP.	36.226380	-115.987200	20S 53E Sec 11
Buffalo Road Pit & Mill	Clark	Sand and Gravel, Construction	Surface	Producer	Buffalo Pit & Mill, Stocks Mill & Supply Co Pit	NEV. DIV. MINE INSPECTION, 1975, DIRECTORY OF NEVADA MINEOPERATIONS ACTIVE DURING CALENDAR YEAR 1974, P. 7.NEV. DIV. MINE INSPECTION, 1982, DIRECTORY OF NEVADA MINEOPERATIONS ACTIVE DURING CALENDAR YEAR 1982, P. 6.NEV. DIV. MINE INSPECTION, 1991,	36.108290	-115.288300	21S 60E Sec 20
Calhoon's Sand and Gravel Pit	Nye	Sand and Gravel, Construction	Surface	Producer		NEV. DIV. MINE INSPECTION, 1991, DIRECTORY OF NEVADA MINEOPERATIONS ACTIVE DURING CALENDAR YEAR 1990, P. 70.	36.182790	-115.931900	20S 54E Sec 29
Calvada Pit	Nye	Sand and Gravel, Construction	Surface	Past Producer		DIRECTORY OF ACTIVE NEV MINE OPERATIONS 1975OFFICE OF THE NEV STATE INSPECTOR OF MINESWULFENSTEIN CONSTRUCTION RAY WULFENSTEIN OWNER PAHRUMP NV8N. SIDE HWY. 52 NEAR VALLEY ELECTRIC	36.208880	-115.996100	20S 53E Sec 14
Flamingo Road Pit	Clark	Sand and Gravel, Construction	Surface	Past Producer		DIRECTORY OF ACTIVE NEV MINES OCT.1975,STATE INSPECTOR MINES	36.123590	-115.256400	21S 60E Sec 15
Indian Springs Pit & Mill	Clark	Stone, Crushed/Broken	Surface	Past Producer		NV. DIV. MINE INSPECTION, 1977, DIRECTORY OF NEVADA MINEOPERATIONS ACTIVE DURING CALENDAR YEAR 1976, P. 10.NV. DIV. MINE INSPECTION, 1978, DIRECTORY OF NEVADA MINEOPERATIONS ACTIVE DURING CALENDAR YEAR 1977, P. 43.NV. DIV. MINE INSPECTION, 1979, DIRECTOR	36.572180	-115.655800	16S 56E Sec 09
Janet Sand Pit	Clark	Sand and Gravel, Construction	Surface	Producer		NEV. DIV. MINE INSPECTION, 1991, DIRECTORY OF NEVADA MINEOPERATIONS ACTIVE DURING CALENDAR YEAR 1990, P. 11.	36.253290	-115.318300	19S 59E Sec 36
Lone Mountain Stocks Pit	Clark	Sand and Gravel, Construction	Surface	Producer	Lone Mountain Pit	NEV. DIV. MINE INSPECTION, 1982, DIRECTORY OF NEVADA MINEOPERATIONS ACTIVE DURING CALENDAR YEAR 1982, P. 7.NEV. DIV. MINE INSPECTION, 1987, DIRECTORY OF NEVADA MINEOPERATIONS ACTIVE DURING CALENDAR YEAR 1986, P. 9.NEV. DIV. MINE INPSECTION, 1990	36.248590	-115.353900	19S 59E Sec 34
Pahrump Community Pit & Mill	Nye	Sand and Gravel, Construction	Surface	Past Producer		MESA,REGULAR SAFETY INSPECTION REPORT,NOV.30,1976,ID NO:26-0	36.209390	-115.940500	20S 54E Sec 17
Quality Sand and Gravel Pit	Clark	Sand and Gravel, Construction	Surface	Producer	Blue Sky No. 1 Pit	NEV. DIV. MINE INSPECTION, 1991, DIRECTORY OF NEVADA MINEOPERATIONS ACTIVE DURING CALENDAR YEAR 1990, P. 12, 13.	36.246690	-115.316100	20S 59E Sec 01
Rico Paving & Grading Pit	Clark	Sand and Gravel, Construction	Surface	Past Producer	Rico Paving & Grading Co Pit	DIRECTORY OF ACTIVE NEV MINES OCT. 1975, STATE INSPECTORMINES, P. 11.	36.119390	-115.259100	21S 60E Sec 15
Salt Lake Highway North	Clark	Sand and Gravel, Construction	Surface	Producer		NEV. DIV. MINE INSPECTION, 1991, DIRECTORY OF NEVADA MINEOPERATIONS ACTIVE DURING CALENDAR YEAR 1990, P. 9.	36.254190	-115.328600	19S 59E Sec 36
Sandstone Quarry	Clark	Stone, Crushed/Broken	Surface	Producer		U.S. BUREAU OF MINES FILES (WFOC).	36.163890	-115.450200	20S 58E Sec 35
Spring Mountain Pit & Mill	Clark	Sand and Gravel, Construction	Surface	Past Producer	Spring Mtn Pit & Mill	NEV INDUS COMM DIR OF ACT NEV MINE OPS,1976,JAN 31,1977,P.9.	36.123290	-115.271400	21S 60E Sec 16
Spring Mt. Road Pit & Mill	Clark	Sand and Gravel, Construction	Surface	Producer	Spring Mt.Rd.Pit&Mill	DIRECTORY OF ACTIVE NEV MINES OCT. 1975, STATE INSPECTORMINES, STATE OF NEVADA. DIRECTORY OF NEVADA MINEOPERATIONS, P. 6.	36.151390	-115.270200	21S 60E Sec 04
Summerlin Pit	Clark	Sand and Gravel, Construction	Surface	Producer		NEV. DIV. MINE INSPECTION, 1991, DIRECTORY OF NEVADA MINEOPERATIONS ACTIVE DURING CALENDAR YEAR 1990, P. 15.	36.211090	-115.306400	20S 60E Sec 18
Tule Springs Pit & Mill	Clark	Sand and Gravel, Construction	Surface	Past Producer		NEV INDUS COMM DIR OF ACT NEV MINE OPS,1976,JAN 31,1977,P.7.	36.313890	-115.286900	19S 60E Sec 08
Valley Sand and Gravel	Nye	Sand and Gravel, Construction	Surface	Producer		DIRECTORY OF ACTIVE NEV MINE OPERATIONS 1975OFFICE OF THE NEV STATE INSPECTOR OF MINESPETE BROWN OWNER PO BOX 118 PAHRUMPNV 89041	36.180790	-115.933900	20S 54E Sec 29
West Ann Road Pit	Clark	Sand and Gravel, Construction	Surface	Plant		DIRECTORY OF NEVADA MINE OPERATIONS ACTIVE IN 1985, COMPILEDBY DIVISION OF MINE INSPECTION, 1985, P.12	36.264390	-115.363300	19S 59E Sec 27
Wulfenstein Pit	Nye	Sand and Gravel, Construction	Surface	Producer		NEV. DIV. MINE INSPECTION, 1980, DIRECTORY OF NEVADA MINEOPERATIONS ACTIVE DURING CALENDAR YEAR 1979, P. 46.NEV. DIV. MINE INSPECTION, 1993, DIRECTORY OF NEVADA MINEOPERATIONS ACTIVE DURING CALENDAR YEAR 1992, P. 65.	36.224380	-115.981100	20S 53E Sec 11