

GEOLOGICAL MOSAIC

GEOLOGY AND MINING HISTORY OF THE CENTRAL SPRING MOUNTAINS, CLARK COUNTY, NEVADA

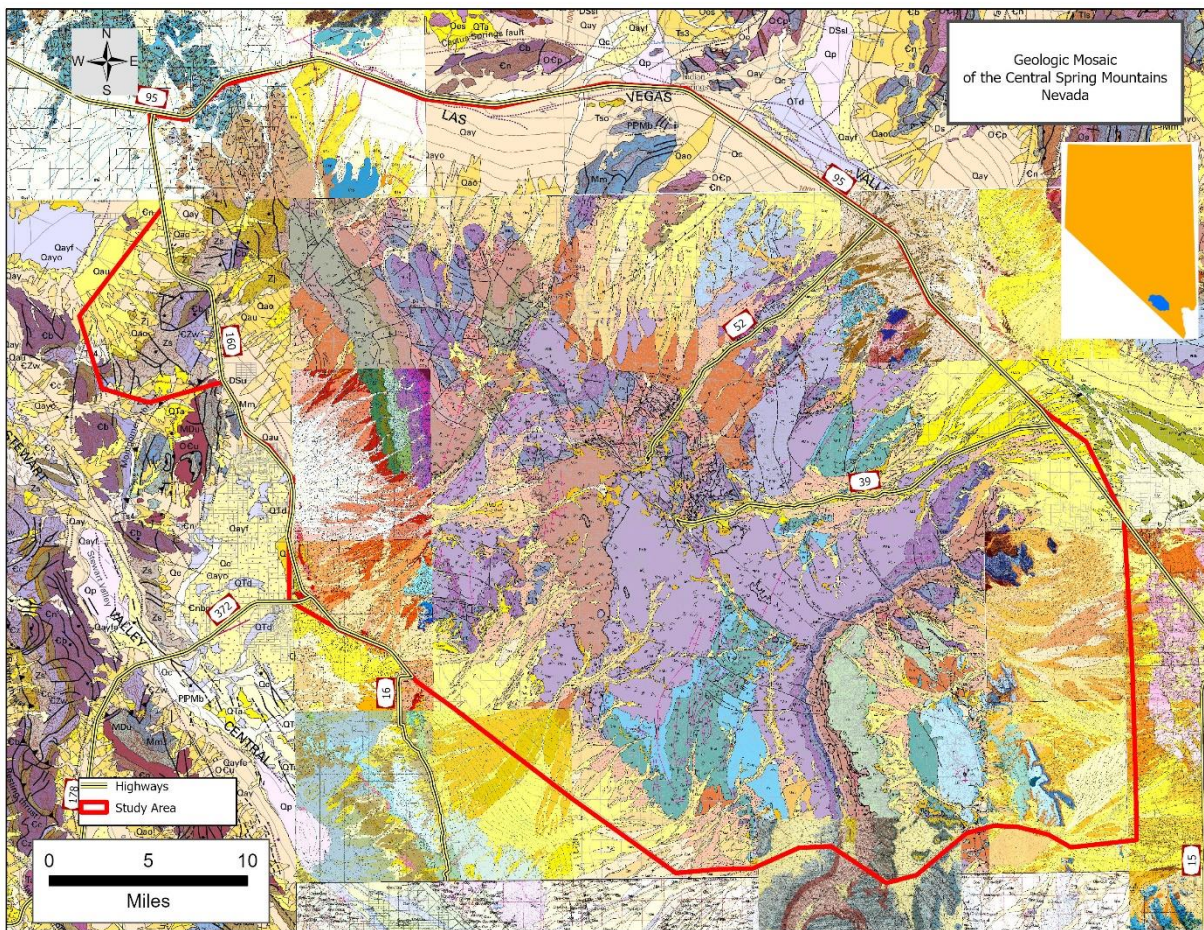
Gregg Wilkerson

2024

yosoygeologo@gmail.com

This mosaic supports the report posted at

<http://www.greggwilkerson.com/spring-mnts-central.html>

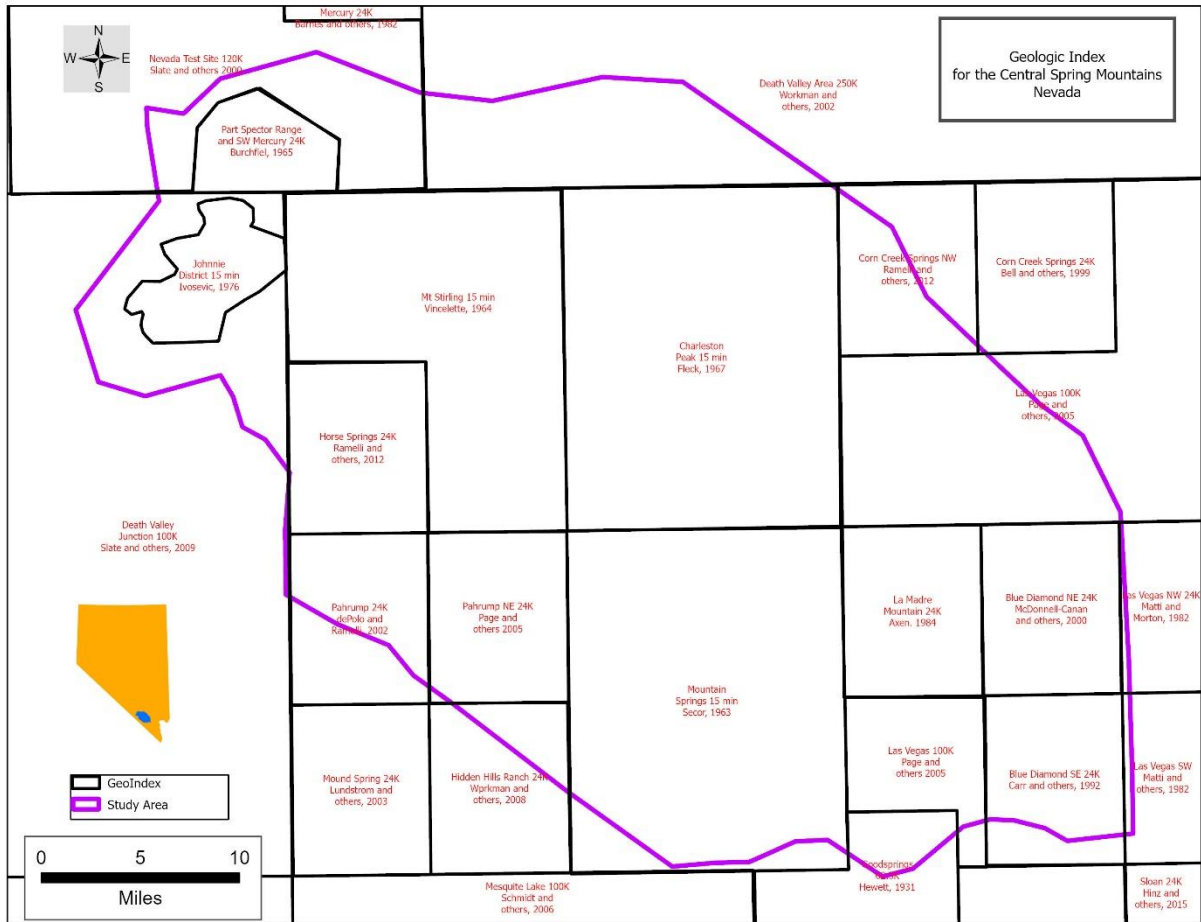


The maps used for this mosaic and for the reports listed in are identified in the Table 01, below:.

TABLE 01. Mapping of the central Spring Mountains, Nevada

MAP NAME OR QUADRANGLE	SCALE	AUTHORS
Blue Diamond NE	24K	Carr, 1992
Blue Diamond SE	24K	Carr and Donnel-Canan, 1992
Corn Creek Springs	24K	Bell and others, 199
Corn Creek Springs NW	24K	Ramelli and others, 2012
Hidden Hills Ranch	24K	Workman and others
Horse Springs	24K	Ramelli and others, 2002
Johnnie Mining District	24K	Ivosevic, 1976
La Madre Mountain	24K	Axen, 1985
Las Vegas NW	24K	Matti and Morton, 1982
Las Vegas SW	24K	Matti and Bachhuber, 1982
Mercury	24K	Barnes and others, 1982
Mound Spring	24K	Lundstrom and others, 2003
Sloan	24K	Hinz and others, 2015
Pahrump	24K	dePolo and others, 1999
Goodsprings	62.5K	Hewett, 1931, Carr, 1978
Beatty	100K	Carr and other, 1996
Death Valley Junction	100K	Slate and others, 2009
Las Vegas	100K	Page and others, 2005
Mesquite Lake	100K	Schmidt and McMackin, 2006
Spring Mountains	100K	Burchfiel and others, 1974
Nevada Test Site	120K	Slate and others, 2000
Death Valley	250K	Jennings, 1958; Streitz and Stinson, 1974
Death Valley Region	250K	Workman and others, 2002 (hydrology study)
Kingman	250K	Jennings, 1961
Las Vegas	250K	Bohannon, 1978; IntraSearch, 1977
Nye County (northern)	250K	Kleinhample and Ziony, 1984
Nye County (southern)	250K	Cornwall, 1967, 1972
Clark County	250K	Longwell and others, 1965; Vandeberg, 1937
Nevada	750K	Nevada Bureau of Mines and Geology, 2024; Stewart and Carlson, 1978

Here is an index map for the mosaic



ARC PRO PRODUCTS

A map package for this mosaic is available upon request.